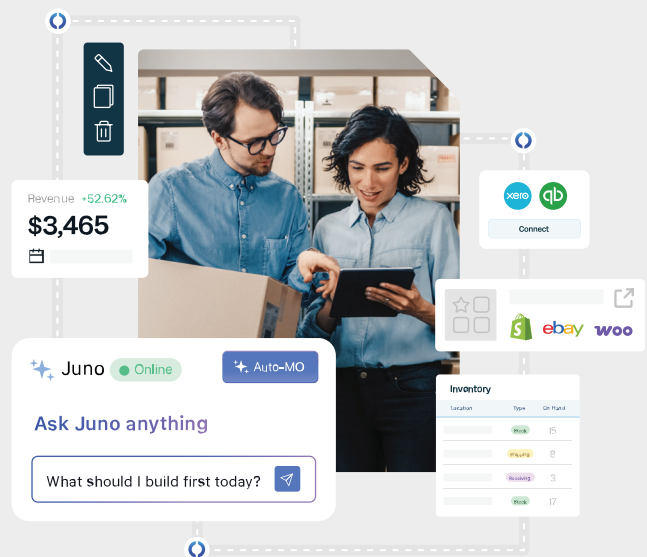


Simple, scalable inventory management - built for your growing business

Track, control, and fulfill with confidence using an AI-native inventory platform engineered from the ground up - seamlessly connecting with Xero, QuickBooks, and the systems you already rely on.

Smarter inventory starts here.

Fishbowl Inventory is an AI-native platform purpose-built for growing businesses. Rather than adding automation as an afterthought, Fishbowl embeds intelligence at its core - delivering real-time visibility, streamlined workflows, and seamless integrations that scale with your operations.



See everything. Control everything. Grow without limits.

Prevent stockouts, reduce costly errors, and run your operation with confidence. With AI-driven forecasting and intelligent insights, Fishbowl helps you move from reactive to proactive - so you're always one step ahead.

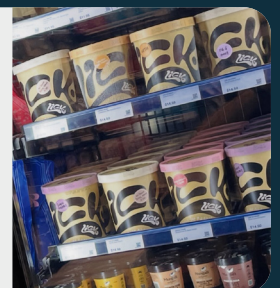
“Fishbowl is an invaluable asset to our entire organisation. We now operate as a unified whole”

Sandra Gosling - Co-Founder, COYO



“Fishbowl has made us confident with traceability. It's made us confident with our margins as well.”

Simon West - CEO & Owner, Lick Ice Cream



Real-time inventory management - any time, anywhere

Fishbowl makes it easy to keep accurate, up-to-the-minute inventory records. With intelligent software that eliminates manual data entry errors while offering real-time traceability, integrations with powerful tools like Xero and QuickBooks, and detailed reporting, you'll streamline your processes and get results you can count on.

If you need tracking Fishbowl has you covered

Expiration date, lot numbers, and more - there's nothing quite like an inventory management system that lets you track items by whatever data point you choose. Whether you use one of Fishbowl's built-in options or take advantage of our top-tier customization capabilities, you'll ensure accuracy and compliance for every asset and piece of inventory you manage.

Feature List

- ✓ Real-time inventory data
- ✓ Multi-warehouse support (unlimited)
- ✓ Ecommerce + marketplace integrations (Shopify, WooCommerce, Amazon, Walmart, eBay)
- ✓ Shipping integrations + tools (Shippo)
- ✓ Lot, serial, and expiration tracking
- ✓ Cycle counting
- ✓ Pick/pack/ship lists + picking/receiving workflows
- ✓ QuickBooks Online / Xero integration

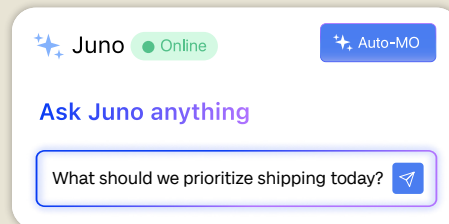
Juno (24/7 Warehouse Assistant)

Ask in plain language:

- ✓ "What should we pick next?"
- ✓ "Which SKUs are at risk of stocking out?"
- ✓ "Where is pallet WH-247 located?"

Juno monitors your warehouse in real time - inventory levels, open orders, pick queues, replenishment needs, and shipment deadlines - and surfaces what needs attention before it becomes a problem.

Juno can generate pick lists, suggest replenishment tasks, flag inventory discrepancies, draft transfer orders, and ask follow-up questions when key details are missing.



You've got a manufacturing emergency on your hands. Here's what I'm seeing:

CRITICAL ALERTS:

- 3 priority orders scheduled for same-day dispatch are short on stock (SKU-1428)
- You have 12 items with stock below re-order point.
- You have 5 orders that can now be fulfilled today

Fishbowl Inventory Mobile is the execution layer of Fishbowl.



It empowers warehouse teams to scan barcodes, pick, move, receive, and update inventory in real time from iOS or Android devices - so work gets done on the floor, not at a desk. If Fishbowl runs your inventory system, Mobile runs your warehouse execution.

Results our customers have seen since switching over to Fishbowl

↓ -50%
scheduling time

↑ 12K
costs saved
per month

↑ 3hrs
saved per day

