



GDIX
川达机械



河北川达机械制造有限公司
Hebei Chuanda Machinery Manufacturing Co., Ltd

冻肉切丁机 CD300



技术参数

- 电压：三相380v 频率50Hz
- 内筒直径：300mm
- 物料尺寸：直径小于100mm
- 外形尺寸：1410x760x1208mm
- 整机材料：SUS304不锈钢
- 切割范围：4~12mm冻肉丁、丝、片
- 投料方式：连续
- 控制系统：PLC 触摸屏 变频器
- 总功率：7kW
- 产量：500~1000kg/h
- 重量：464kg
- 切割温度范围：-10℃~0℃
- 适宜切割温度：-6℃~-5℃
- 生产解冻环境温度：-8℃~-4℃
- 厚度调节：人工手动

性能介绍

- 先进的刀具拆卸方式
徒手拆卸刀组，不用任何工具
- 清洗方式
用水枪直接清洗
- 安全装置
感应式自动电路切断
- 用途
冻肉切丁、丝、片

Frozen Meat Dicer CD300

I Technical Data:

- Voltage&Frequency: 380V/50Hz/3Phase or According to Customer's Demands
- Power: 7kW
- Inner Drum Diameter: 300mm
- Capacity: 500~1000kg
- Input Material Size: Diameter Less Than 100mm
- Cutting Size Range: 4~12mm Frozen Meat Slices, Strips and Cubes
- External Dimension: 1410*760*1208mm
- Weight: 464kg
- Material of the Machine: SUS304 Stainless Steel
- Cutting Temperature for the Frozen Meat: -10℃~0℃
- Suitable Cutting Temperature for the Frozen Meat: -6℃~-5℃
- Meat Thaw Environment Temperature: -8℃~-4℃
- Material Input Way: Continuously
- Lubricating Way: Oil Nozzle
- Thickness Control: Manual Adjustment
- Control System: PLC, Touch Screen, Frequency Transformer

II Introduction:

- Advanced Knife Rollers Disassembly Way:
Workers Could Disassemble the Knife Rollers by Hands, no Need any Tools
- Cleaning Way:
High Pressure Gun Flush Directly
- Safety Equipment:
Inductive Automatic Shutoff Circuit
- Application:
Frozen Meat Slice, Strips and Cubes

冻肉切片机 CD455



技术参数

- 电压：三相380v 频率50Hz
- 总功率：9.12kW
- 切刀速度：27-90次/分钟
- 切片厚度：0.3-700mm
- 物料尺寸：430×700mm
- 切割高度：190mm/250mm
- 外形尺寸：2100x1100x1800mm
- 整机材料：SUS304不锈钢
- 切割温度范围：-10℃-0℃
- 重量：988kg
- 适宜切割温度：-6℃--5℃
- 放料方式：往复间断
- 生产解冻环境温度：-8℃--4℃
- 润滑方式：机体油嘴
- 控制系统：PLC 触摸屏 变频器

性能介绍

- 先进的结构设计
六导柱直线定位运动切割结构
- 推料板可徒手拆卸清洗
- 下刃口磨损可更换
- 清洗方式
用水枪直接清洗
- 安全装置
感应式自动电路切断
- 用途
冻肉切片、条、块、卷

Frozen Meat Slicer CD455

I Technical Data:

- Voltage: 380V/50Hz/3Phase or According to Customer's Demands
- Power: 9.12kW
- Knife Cutting Speed: 27-90Times/Minute
- Knife Cutting Thickness: 0.3-700mm
- Input Material Size: 430*700mm
- Cutting Height: 190mm/250mm
- External Dimension: 2100x1100x1800mm
- Weight: 988kg
- Machine Material: SUS304 Stainless Steel
- Cutting Temperature for the Frozen Meat: -10℃ ~ 0℃
- Suitable Cutting Temperature for the Frozen Meat: -6℃--5℃
- Meat Thaw Environment Temperature: -8℃ ~ -4℃
- Material Input Way: Put the Material Continuously
- Lubricating Way: Oil Nozzle
- Control System: PLC, Touch Screen, Frequency Transformer

II Introduction:

- Advanced Structure Design:
Six Guide Pillar Straight-line Positioning Cutting Structure
- Pushing Plate Could be Disassembled and Cleaned by Hands
- The lower Edge is Worn and Replaceable
- Cleaning Way:
High Pressure Gun Flush Directly
- Safety Equipment:
Inductive Automatic Shutoff Circuit
- Application:
Frozen Meat Slice, Strips, Blocks and Rolls.

连续式切片机 CD430



🔧 技术参数

- 电压：三相380V 频率50Hz
- 切刀速度：27-90次/分钟
- 物料尺寸：430mm
- 外形尺寸：2510x1060x1555 mm
- 整机材料：SUS304拉丝不锈钢
- 重量：1500kg
- 放料方式：连续
- 润滑方式：机体油嘴
- 控制系统：PLC 触摸屏 变频器
- 总功率：9.12kW
- 切割范围：3~1000mm 可调
- 切割高度：190mm/250mm
- 气源：0.2MPa
- 切割温度范围：-10℃~0℃
- 适宜切割温度：-6℃~-5℃
- 生产解冻环境温度：-8℃~-4℃

⚙️ 性能介绍

- 先进的切割方式
六导柱直线运动切割结构
- 先进的送料结构
上下传送带夹料输送，上压料带与物料接触面始终保持平面状态
- 下刃口磨损可更换
- 清洗方式：
用水枪直接清洗
- 安全装置
感应式自动电路切断
- 用途
冻肉切片、条、块

Continuous Frozen Meat Slicer CD430

I Technical Data:

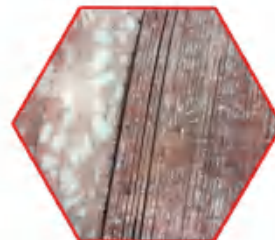
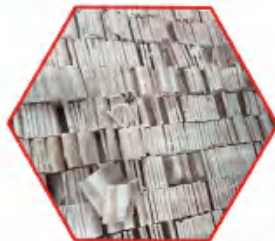
- Voltage: 380V/50Hz/3Phase or According to Customer's Demands
- Power: 9.12kW
- Air Source: 0.2MPa
- Knife Cutting Speed: 27~90Times/Minute
- Cutting Size: 3~1000mm Cubes, Strips and Slice
- Input Material Width: 430mm
- Cutting Height: 190mm/250mm
- External Dimension: 2510*1060*1555mm
- Weight: 1500kg
- Machine Material: SUS304 Wire Drawing Stainless Steel
- Cutting Temperature for the Frozen Meat: -10℃~0℃
- Suitable Cutting Temperature for the Frozen Meat: -6℃~-5℃
- Meat Thaw Environment Temperature: -8℃~-4℃
- Material Input Way: Put the Material Continuously
- Lubricating Way: Oil Nozzle
- Control System: PLC, Touch Screen, Frequency Transformer

II Introduction:

- Advanced Cutting Way:
Six Guide Pillar Straight-line Cutting Structure
- Advanced Feeding-in Structure:
Up and Down Conveyor Belt Press the Meat and Feeding-in, the up Belt Part Connecting with the Meat is Always Flat
- The lower Edge is Worn and Replaceable
- Cleaning Way:
High Pressure Gun Flush Directly
- Safety Equipment:
Inductive Automatic Shutoff Circuit
- Application:
Frozen Meat Slice, Strips and Big Cubes.



连续砍排机 CDV280/CDV360



☑ 技术参数

- 电压: 380v 频率50Hz
- 功率: 5.5kW/7kW
- 进料尺寸: 宽260mm, 高100mm / 宽360mm, 高140mm
- 重量: 1200公斤/1600公斤
- 切割温度范围: -6℃~0℃
- 外形尺寸: 2490x1090x1440 mm/2600x1300x1700 mm
- 生产解冻环境温度: -6℃~-3℃
- 切割尺寸: 1~50mm范围任意调整
- 适宜切割温度: -4℃~-3℃
- 生产量: 120~290刀/分钟 / 160~320刀/分钟
- 放料方式连续
- 控制系统: PLC触摸屏 变频器 霍尔开关式

⚙ 性能介绍

- 切刀驱动: 由单独一台电机驱动, 用变频器控制, 根据物料调节切割刀速。
- 物料输送部分: 由一台伺服电机驱动, 根据需求, 在一定范围内随意调整输送速度。
- 用途: 肉类、骨类切片、切丝、切段, 切割范围1-50mm。

Continuous Cutting Machine CDV280/CDV360

I Technical Data:

- Voltage: 380V/50Hz/3Phase or According to Customer's Demands
- External Dimension: 2490x1090x1440 mm/2600x1300x1700mm
- Power: 5.5kW/7kW
- Feed Size: Width260mm, Height100mm / Width360mm, Height140mm
- Weight: 1200kg/1600kg
- Cutting Temperature for the Frozen Meat: -6℃~0℃
- Suitable Cutting Temperature for the Frozen Meat: -4℃~-3℃
- Meat Thaw Environment Temperature: -6℃~-3℃
- Knife Cutting Speed: 120~290 Times/Minute / 160~320Times/Minute
- Cutting Size: 1~50mm
- Material Input Way: Put the Material Continuously
- Control System: PLC Touch Screen, Frequency Transformer, Hall Switch

II Introduction:

- Cutting Knife-Driven: Driven by One Single Motor, Controlled by Frequency Transformer, Cutting Speed is Based on the Material.
- Material Transportation: Driven by One Single Servo Motor, Able to Customize Transportation Speed Base on Demands
- Application: Meat, Slicing, Dicing, Cutting Range 1-50mm

鲜肉切片机 CDX315



技术参数

- 电压：三相 380V 频率 50Hz
- 进料宽度：315mm
- 进料高度：100mm
- 外形尺寸：2800*1200*1700mm
- 生产量：90刀/分钟 X 2刀
- 适宜切割温度：-3℃~3℃
- 放料方式：连续
- 润滑方式：机体外油嘴
- 总功率：5.37 KW
- 切割范围：1-20mm
- 重量：1000KG
- 材质：SUS 304不锈钢
- 控制系统：PLC 触摸屏 变频器

性能介绍

- 可徒手拆卸进料皮带和出料皮带
- 压料皮带采用水平压料方式，且压力可调，无尾料
- 采用双圆刀边旋转边切割的原理，保证肉切面光滑且无连刀现象
- 通过伺服送料及可调节的切片厚度装置，在屏幕上读取切割厚度，保证切割厚度精准
- 用途：适用于牛肉、羊肉、猪肉、鸡肉等鲜肉切片

Fresh Meat Slicer CDX315

I Technical Data:

- Voltage&Frequency: 380V/50Hz/3Phase or According to Customer's Demands
- Power 5.37KW
- Feed Width 315mm Feed Height 100mm
- Cutting Speed: 90 times/Minutes X 2 times
- External Dimension: 2800* 1200* 1700mm
- Weight: 1000kg
- Suitable Cutting Temperature: -3℃~3℃
- Cutting Range: 1-20mm
- Material: SUS 304 Stainless Steel
- Material Input Way: Continuously
- Control System: PLC Touch Screen, Inverter Frequency Transformer
- Lubrication Method: Oil Nozzle

II Introduction:

- The Feed Belt And Discharge Belt Can Be Disassembled By Hand
- The Press Belt Adopts The Horizontal Press Mode, And The Pressure Is Adjustable, No Tail Material
- By adopting the principle of rotating and cutting simultaneously with two circular knives, To Ensure That The Meat Section Is Smooth And It Splits All The Meat
- The Cutting Thickness Is Read On The Screen Through The Servo Feed And Adjustable Slice Thickness Device To Ensure Accurate Cutting Thickness
- Application: Suitable For Beef, Lamb, Pork, Chicken And Other Fresh Meat Slices

多功能切丁机 CD400



☑ 技术参数

- 电压：三相380v 频率50Hz
- 内筒直径：400mm
- 物料尺寸：直径小于200mm
- 外形尺寸：1440x1250x1600mm
- 整机材料：SUS304不锈钢
- 投料方式：连续
- 润滑方式：机体外油嘴
- 控制系统：防水按钮 变频器
- 总功率：7.5kW
- 产量：2000~4000kg/h
- 切割范围：3~12mm丁、丝、片
- 重量：600kg
- 冻肉切割温度范围：-5℃~0℃
- 生产解冻环境温度：-6℃~-3℃
- 厚度调节：人工手动

⚙️ 性能介绍

- 刀片采用进口刀片
刀片薄且锋利，切面光滑
- 清洗方式
用水枪直接清洗
- 安全装置
感应式自动电路切断
- 用途：
可对奶酪、蔬菜、冷冻水果、冷冻肉类进行丁、丝、片切割

Multi-Function Cutting Machine CD400

I Technical Data:

- Voltage&Frequency: 380V/50Hz/3Phase or According to Customer's Demands
- Power: 7.5kW
- Inner Drum Diameter: 400mm
- Capacity: 2000~4000kg/h
- Input Material Size: Diameter less than 200mm
- Cutting Size Range: 3~12mm Slices, Strips and Cubes
- External Dimension: 1440*1250*1600mm
- Weight: 600kg
- Material of the Machine: SUS304 Stainless Steel
- Cutting Temperature for the Frozen Meat: -5℃~0℃
- Meat Thaw Environment Temperature: -6℃~-3℃
- Material Input Way: Continuously
- Lubricating Way: Oil Nozzle
- Thickness Control: Manual Adjustment
- Control System: Waterproof Button, Frequency Transformer

II Introduction:

- Use Imported Knife Blades:
The Knife Pieces is Thin and Sharp, Cutting Surface is Smooth
- Cleaning Way:
High Pressure Gun Flush Directly
- Safety Equipment:
Inductive Automatic Shutoff Circuit
- Application:
Cheese, Vegetables, Frozen Meat and Frozen Fruit Cutting, Slices, Strips and Cubes

波纹薯条机 CDT500



☑ 技术参数

- 电压：三相380v 频率50Hz
- 内筒直径：500mm
- 切割范围：3~20mm
- 外形尺寸：1800x1300x1930mm
- 整机材料：SUS304不锈钢
- 润滑方式：机体外油嘴
- 总功率：5.5 kW
- 产量：1000~5000kg/h
- 物料尺寸：直径小于200mm
- 重量：680 kg
- 投料方式：连续
- 厚度调节：人工手动

⚙️ 性能介绍

- 清洗方式
用水枪直接清洗
- 安全装置
感应式自动电路切断
- 用途
1.可更换刀组对根茎类蔬菜做丁、丝、片切割
2.可对土豆、红薯、芋头等根茎类农作物进行波浪条或波浪纹切割

Wavy Grain French Fry Machine CDT500

I Technical Data:

- Voltage&Frequency: 380V/50Hz/3Phase Or According To Customer's Demands
- Power: 5.5Kw
- Inner Drum Diameter: 500mm
- Input Material Size: Diameter Less Than 200mm
- Capacity: 1000~5000Kg/H
- Cutting Size Range: 3~20mm
- External Dimension: 1800x1300x1930mm
- Weight: 680Kg
- Material Of The Machine: SUS304 Stainless Steel
- Material Input Way: Continuously
- Lubricating Way: Oil Nozzle
- Thickness Control: Manual Adjustment

II Introduction:

- Cleaning Way:
High pressure gun flush directly
- Safety Equipment:
Inductive Automatic Shutoff Circuit
- Application:
1. Replaceable Knife Set For Root Vegetables Cutting, Slices ,Strips And Cubes
2. The Root Crops Such As Potatoes, Sweet Potatoes And Taro Can Be Cut With Wavy Strips Or Wavy Patterns

去根机 CDG



技术参数

- 电压：三相380v 频率50Hz
- 总功率：0.55kW
- 产量：5-10秒/棵
- 气压：0.6MPa
- 外形尺寸：865x820x1405mm
- 重量：234 kg
- 整机材料：SUS304不锈钢

性能介绍

- 专用于白菜，圆白菜去根
- 产品高效，双手操作，安全、方便、稳定、卫生
- 自由调节圆白菜（白菜）去根深度
- 多种去根刀具，可以控制去根大小
- 清洗方式：直接用水枪清洗

Vegetable Root Remover CDG

Machine Parameters:

- Voltage: Three-Phase 380v
- Frequency: 50Hz
- Power: 0.55kW
- Air Pressure: 0.6MPa
- External Dimensions: 865x820x1405mm
- Weight: 234 kg
- Production Capability: 5-10 Sec/Pieces
- Material of the Machine: SUS304 Stainless Steel

Machine Introduction:

- Professional in Cabbage and Other Vegetables Root Removing
- The Machine is Easy to Use (can Operate With Hands Directly), and the Machine is Efficient, Convenience and Stable.
- The Machine can Use Customized Blade Size to Meet Different Vegetable Root Use.
- How to Clean the Machine: Directly Use Water Gun to Clean.



多功能切片切丝机 CD190



🔧 技术参数

- 电压：三相380v 频率50Hz
- 功率：5.5Kw
- 外形尺寸：1800X1000X1500mm
- 重量：530kg
- 物料切割尺寸：宽190mm，高140mm
- 生产量：100-644刀/分钟
- 切割范围：1-50mm范围任意调整
- 进料口离地高度：910mm
- 出料口离地高度：500mm
- 整机材料：SUS304不锈钢
- 切割方式：连续入料

⚙️ 性能介绍

- 输送带可徒手拆卸，方便清洁
- 上压料带前端随物料起伏，始终与切刀距离保持不变
- 安全保护：入料保护罩为感应开关，出料保护罩为霍尔开关
- 用途：叶类、根茎类蔬菜切段、切片

Multi-Functional Slicing Machine CD190

I Technical Data:

- Voltage&Frequency: 380V/50Hz/3Phase or According to Customer's Demands
- Power: 5.5kw
- External Dimension: 1800*1000*1500mm
- Weight: 530kg
- Cutting Size: Width190mm, Height140mm
- Knife Cutting Speed: 100-644 Times/Minute
- Cutting Size: 1-50mm, According to Customer's Demands
- Input Material Height: 910mm
- Output Material Height: 500mm
- Machine Material: SUS304 Wire Drawing Stainless Steel
- Material Input Way: Put the Material Continuously

II Introduction:

- The Conveyor Belt can be Disassembled by Hand for Easy Cleaning.
- The Front End of the Upper Pressing Belt Fluctuates With the Material, and the Distance From the Cutter Remains Unchanged
- Security Protection: Material Input Protective Cover is an Induction Switch, and the Material Output Protective Cover is a Hall Switch
- Application: Leaf, Root Vegetables Dicing and Slicing

整形机 CDZX400



技术参数

- 电压: 380v 50Hz
- 产量: 3-5次/分钟
- 外形尺寸: 2780x1600x2000 mm
- 整形腔体尺寸: 700x400x110mm (整形尺寸在此范围内均可定做模具)
- 整机材料: SUS304不锈钢
- 润滑方式: 机体外置加油嘴
- 总功率: 15kW
- 重量: 3900Kg
- 适宜整形温度: -3℃
- 控制方式: 防水按钮PLC伺服驱动器

性能介绍

- 原料大小不一时,可直接通过调整PLC参数进行微量调整
- 整形模具更换方便,不同的原料需要定制不同的模具
- 液压站采用水冷循环降温,增加液压系统使用寿命
- 两个方向固定不动,四个方向可移动,并且任意位置可设定停止
- 清洗方式: 直接用水枪清洗
- 用途: 可以对-6℃以内猪肉 牛肉 羊肉进行整形

Shaping Machine CDZX400

I Technical Data:

- Voltage: 380v 50HZ
- Capacity: 3~5 Times/Minute
- External Dimension: 2780X1600X2000mm
- Plastic Cavity Size: 700X400X110mm (Shaping Size in this Range Can be Customized Mold)
- Material of the Machine: SUS304 Stainless Steel
- Suitable Shaping Temperature: -3℃
- Lubricating Way: Oil nozzle
- Control System: PLC, Waterproof Button, Servo Driver
- Power: 15KW
- Weight: 3900Kg

II Introduction:

- When the size of raw materials is not fixed, Can be Adjusted Directly by Adjusting PLC Parameters
- Shaping Mold Replacement is Convenient, Different Raw Materials Need to Customize Different Molds
- The hydraulic station adopts a water-cooled cycle to cool down to increase the service life of the hydraulic system;
- Two Directions are Fixed, Four Directions Can be Moved, and Any Position Can be Set to Stop
- Cleaning Way: High pressure gun flush directly
- Application: Pork, beef and mutton can be shaped within -6℃



www.cdqgjx.com

河北川达机械制造有限公司

Add : 河北省唐山市玉田县鸦鸿桥东风路工业园区

Add : Dongfeng Road Industrial Park, Yahongqiao Town, Yutian County, Tangshan City, Hebei Province.

PC : 064102

Tel : 13933058487 18686773488

Web : www.cdqgjx.com/www.cdqgjx.net

E-mail : cd@cdqgjx.com