

# Interworld Electronics:

## FoodPro Promotional Brochure



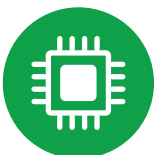
**Industrial Panel PCs**



**Industrial Monitors**



**Embedded Box PCs**



Range of CPU,  
RAM & Storage  
Options



Range of I/O,  
Expansion &  
Connectivity



Dust & Water  
Protection



Shock &  
Vibration  
Protection



Wide Range  
Temperature &  
Power



Durable, Rugged  
Construction

# The Interworld Electronics Advantage

## Innovative Industrial Solutions Tailored for Food & Beverage

Founded in 1989, Interworld Electronics is more than just a component reseller; we are a dedicated partner focused on helping our customers meet the complex demands of modern manufacturing. With over 35 years of experience, we offer a comprehensive range of highly reliable industrial solutions, including stainless steel Panel PCs, hygienic monitors, and rugged Embedded Box PCs. Our goal is to understand your specific application requirements so that we can develop and deliver a total solution that exceeds expectations and ensures long-term operational stability.

## The Interworld Advantage



### Proven Industry Experience

With over 35 years of experience, we understand the specific environmental and regulatory demands of the Australian food and beverage sector. This practical knowledge helps us to identify an ideal solution suitable for your facility's unique challenges, from extreme temperature shifts to chemical washdowns.



### Versatile Customisation

We go beyond “one-size-fits-all” hardware by working closely with you to configure systems that suit your specific needs. From selecting the right processor and memory to tailoring I/O, mounting, and expansion options, we ensure your industrial PC is perfectly matched to your application requirements.



### Ruggedised Reliability

Our products feature industrial-grade components designed for 24/7 operation in the harshest environments. This rugged construction prevents the unplanned downtime and frequent hardware failures often seen with consumer-grade equipment in processing facilities.



### Long-Term Product Lifecycle

We feature products with extended lifecycles (typically 5–10 years), allowing you to standardise your software and mounting setups across multiple sites. This stability eliminates the cost and headache of frequent system redesigns caused by short-lived consumer tech.



### Local Technical Support

Based in Australia, our technical team provides expert guidance through the entire process, from initial selection to configuration. You gain direct access to Melbourne-based experts who understand local industry standards and application requirements.



### Comprehensive Warranty & Support

Every purchase includes lifetime telephone technical support and a comprehensive local warranty managed right here in Australia. We provide peace of mind through reliable return-to-base services and extended warranty options for mission-critical projects.

# Industrial Panel PCs

## VESA / Yoke Mount



### NuTAM-9E Series

- Screen sizes ranging from 15” to 21.5”
- Fully sealed IP66/IP69K SUS304 stainless steel chassis
- Powered by Intel Core Ultra with Arc graphics and NPU
- Advanced AI and edge computing for F&B manufacturing
- Projected capacitive touch with side-mounted on/off button
- Optional 1000nits high brightness display for visibility
- Waterproof M12 I/O (LAN, USB, Serial) for harsh environments
- Supports Wi-Fi 6E, 5G, and Bluetooth via expansion slots
- Wide 9–36V DC input and broad operating temperature range



### ViTAM Series

- Screen sizes ranging from 10.1” to 23.8”
- Fully sealed IP66/IP69K stainless steel (SUS304/316 optional)
- Versatile CPU options from Intel Celeron to 13th Gen Core i5
- True-flat front design tailored for rigorous food processing
- Side-mounted touch on/off button for safe, easy cleaning
- Waterproof M12 I/O connectors for LAN, USB, and Serial
- Resistive or projected capacitive touch, optional 1000nits high brightness
- Integrated RFID module options for secure user access
- Wide-range DC power input and operating temperature

## Panel Mount



### FABS Series

- Screen sizes ranging from 7” to 21.5”
- Food-grade stainless steel front bezel (SUS304/316L)
- Front panel IP66/IP69K rating for high-pressure washdowns
- Powered by Intel Celeron J6412 or 8th Gen Core i3/i5
- Fanless design for 24/7 reliability in dusty or humid zones
- Resistive or projected capacitive touch options
- Slim profile designed for space-constrained machinery
- Extensive connectivity with multiple LAN, USB, and COM ports
- Wide-range DC input and broad operating temperatures



### ARCHMI-S-9D

- Screen sizes ranging from 10.1” to 23.8”
- Efficient HMI solution for processing and packaging lines
- Rugged aluminium die-cast chassis with IP66 front panel
- Powered by 12th Gen Intel Core i3/i5 processors
- Supports up to 64GB of DDR5 memory for advanced automation
- Resistive or projected capacitive touch, 1000nits, auto-dimming options
- Extensive connectivity with multiple COM, LAN, and USB 3.2 ports
- M.2 slots for high-speed Wi-Fi 6E and 5G expansion
- Fanless design and wide-range power & operating temperatures

# Industrial Monitors & Embedded Box PCs

## Industrial Monitors



### FABS-1 Series

- Industrial display with 7" to 21.5" screen size range
- IP66/IP69K rated SUS304/316L stainless steel front bezel
- Flat front panel to resist bacterial build-up in hygiene zones
- Built for high-pressure washdowns in processing lines
- VGA, HDMI, DisplayPort, and DVI-D video inputs
- Resistive, projected capacitive multi-touch, or glass-only options
- Optional 1000nits high brightness panels for intense lighting
- Wide 9–36V DC power input & operating temperature range
- Compact and durable design for harsh food and beverage use



### ViTAM-1 Series

- Industrial display with 10.1" to 23.8" screen size range
- Fully sealed IP66/IP69K stainless steel (SUS304/316 optional)
- Designed for high-pressure and high-temperature washdowns
- Slim, rugged chassis resists corrosion and bacterial growth
- Waterproof M12 connectors for all I/O interfaces
- Resistive, Projected Capacitive multi-touch, or glass-only options
- Side-mounted touch on/off button for safe, easy cleaning
- Optional 1000nits high brightness for intense lighting
- Wide 9–36V DC power input and broad operating temperatures

## Embedded Box PCs



### ACS-330

- Fanless compact box PC designed for machinery and control cabinets
- Powered by Intel Atom x7425E processor
- Supports up to 32GB of DDR5 memory
- Dual 2.5GbE LAN with TSN support for advanced networking
- HDMI and DisplayPort outputs for dual display setups
- USB, Serial, and 8 x DIO ports for extensive automation
- M.2 expansion slots for Wi-Fi, 4G, and 5G connectivity
- Shock and vibration protection with wide 9–36V DC input
- Wide operating temperature range from –20°C to 60°C



### AVS-530

- High-performance fanless box PC for factory automation and machine vision
- Powered by 12th/13th/14th Gen Intel Core i3/i5/i7/i9
- Supports up to 64GB of DDR5 memory for intensive computing
- Front-facing port design for easy access in control cabinets
- Multiple 2.5GbE LAN and USB 3.2 for high-speed data transfer
- Serial and 8-bit DIO (QL version) for machine integration
- M.2 expansion slots for Wi-Fi 6E and 5G connectivity
- Dual removable 2.5" drive bays with RAID 0/1 support
- Wide 9–36V DC input and broad operating temperature range